



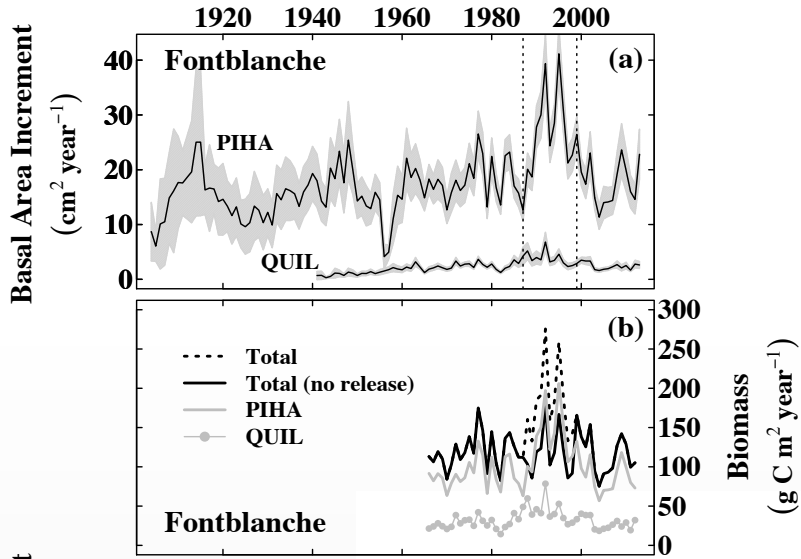
Assessing vulnerability to global change of western Mediterranean forests using a multi-proxy mechanistic approach

TWP2, WP2

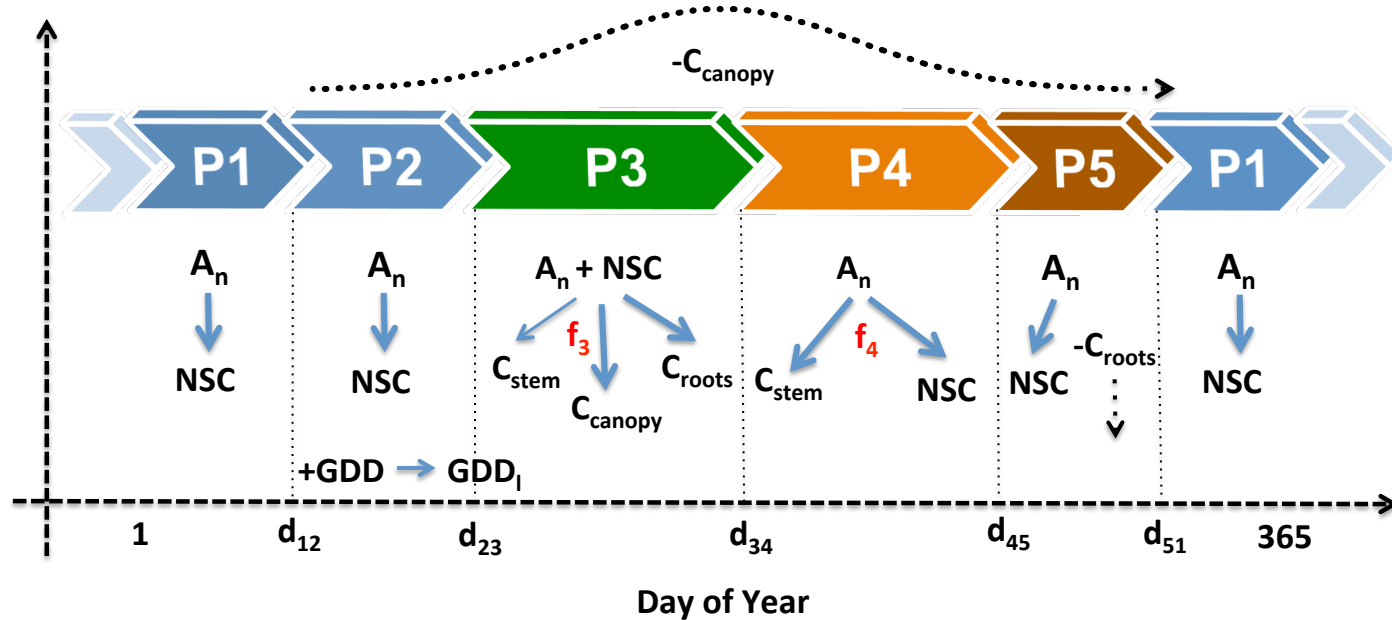
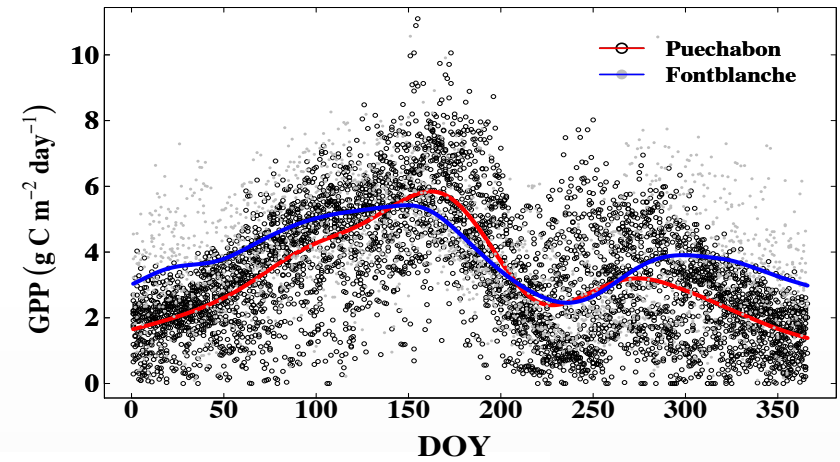
Guillermo Gea-Izquierdo
Post-doc OT-MED
Host Scientist **Joël Guiot**

Connection
Project CYCABIOCLIM
Priorities OT-MED
Forestry: modelling and scenarios; biodiversity

Stem growth data



CO₂ flux data

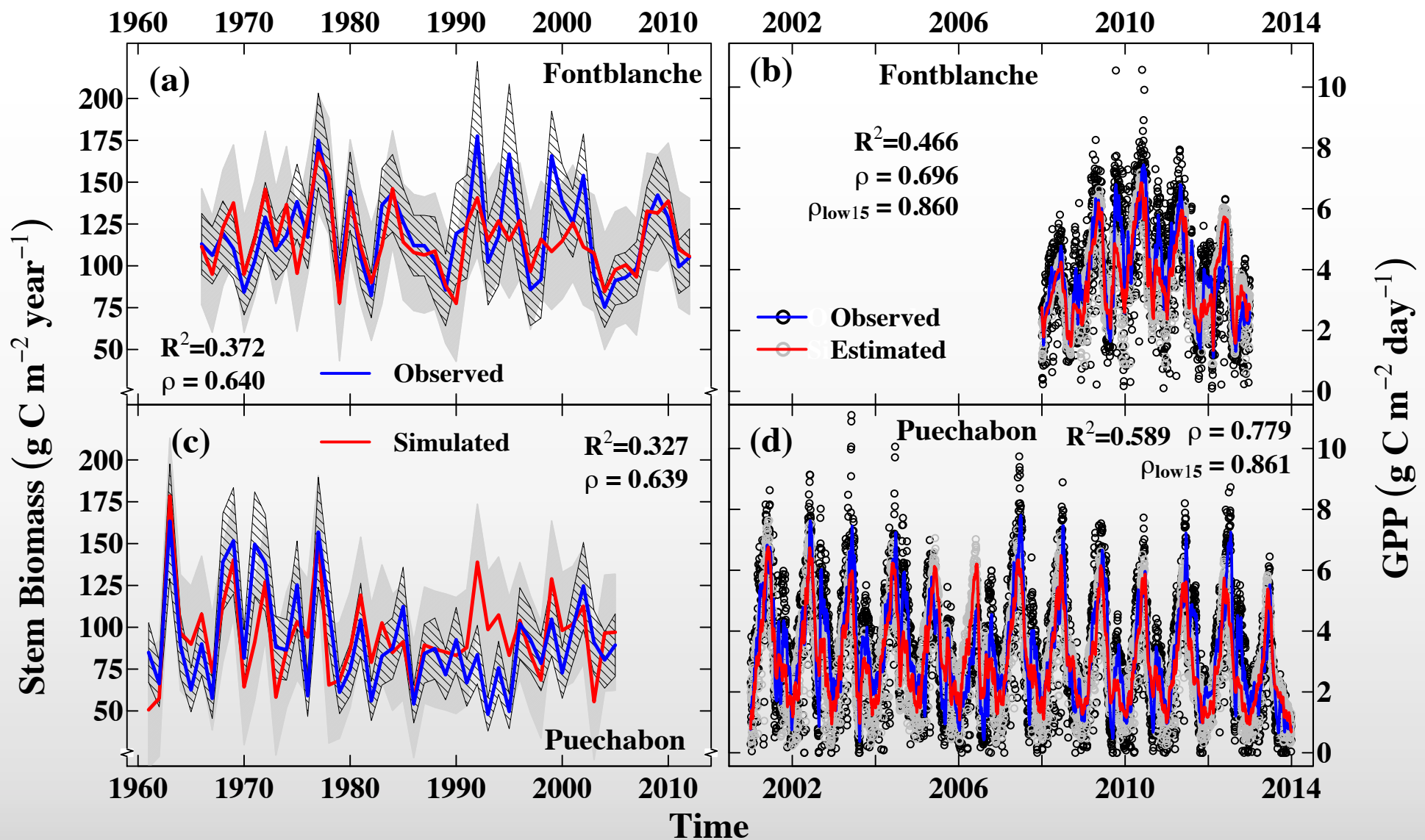


Annual phenology as in the model

A_n=photosynthesis; NSC=non-structural carbohydrates; C_{canopy}=carbon allocated to the canopy

Model calibration in two evergreen Mediterranean species

CO₂ flux + growth (dendrochronology)



Ongoing ...

Long-term processes:
annual data

Network of
chronologies

