

# TWP1. The OT-Med Data Catalog

Romain Suarez<sup>1</sup>

---

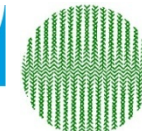
<sup>1</sup> OT-Med– Aix en Provence



A\*Midex  
Initiative d'excellence Aix-Marseille



IRD  
Institut de recherche  
pour le développement



INRA  
Institut National de la Recherche Agronomique



## The first metadata providers

Marianela Fader, Simon Decock

Matteo Vacchi, Olivier Bellier, Xavier Sengelen

Thomas Curt, Christophe Bouillon

Michel Mouléry, Claude Napoleone

Patrick Raimbault, Marie Galeron

Magali Deschamp Cottin

IMBE

CEREGE

IRSTEA

INRA

MIO

LPED

## Technical support

Armand Rotereau, Jean-Claude Raynal

Samuel Robert

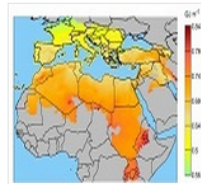
ECCOREV

OHM-LITMED

[Home](#)[Catalog](#)[Map](#)[OT-Med](#)[Login](#)[English](#)[show advanced options](#)

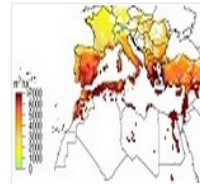
## Welcome to the OT-Med catalogue

### LATEST



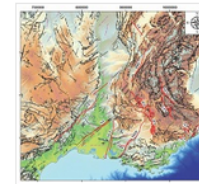
Potential electricity...

Electrical production simulated with an empirical solar pane...



Cultivar's irrigation water...

Gross and net irrigation requirements under climate change (...)



Data compilation of...

This database is a compilation of published data from multip...

### POPULAR



Low frequency hydrological...

Aquisition of main



Meteorological data in the...

Meteorological data from the



Atmospheric deposition into...

Measurement of the flow of

## A simple way to know

What is available

Where is the information

What kind of data

Who is the contact

**For the research and for the public**



- [Home](#)
- [Catalog](#)
- [Map](#)
- [OT-Med](#)
- [Login](#)
- [English](#) ▾



← show advanced options

## Filter

relevance ▾ 0 Selected ▾ Other actions ▾

### Organizations

- MIO (6)
- IMBE (5)
- INRA Avignon (5)
- CEREGE (2)
- IRSTEA (2)
- CEA (1)
- UMR LPED AMU-IRD (1)

### Keywords

- imageryBaseMapsEarthCo
- Land use (4)
- farming (3)
- geoscientificInformation (
- Constantine (3)
- Land cover (3)
- [bay\\_of\\_Marseille \(3\)](#)
- + Show more

### Types

Dataset (21)

### Scale denominators

- 50000 (1)
- 5000 (3)
- 5 (2)

### Years

- 2014 (7)
- 2011 (2)
- 2010 (1)
- 2009 (1)
- 2008 (1)
- 2007 (2)
- 2006 (1)
- + Show more

#### Atmospheric deposition into the Mediterranean

Measurement of the flow of matter from the atmosphere into the Mediterranean in the frame of MOOSE network.

Rain, Atmospheric Conditions, ClimatologyMeteorologyAtmosphere



MIO  
Last update: 2014-10-16



Web link

#### Meteorological data in the Bay of Marseille

Meteorological data from the Bay of Marseille based on the measurements taken on the site located on the Pomegues island

Bay Of Marseille, Atmospheric Conditions, ClimatologyMeteorologyAtmosphere

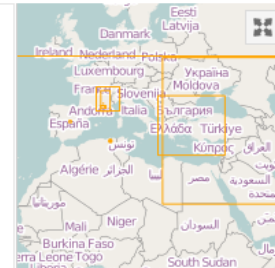


MIO  
Last update: 2014-10-16

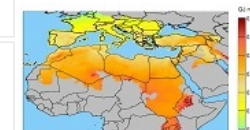


Web link

## Preview



### Potential electricity production with photovoltaic panels in the Mediterranean region



## **A simple summary of a dataset**

According to the INSPIRE Directive

The infrastructure for spatial information in Europe (INSPIRE) Directive aims to develop a European spatial data infrastructure to support environmental policies.

Public bodies are directly concerned

## Metadata elements

Name of the resource

Brief summary

Keywords

Reference date / Temporal extent

Format

Geographic location

Contact

General explanation (methodology,  
parameters, associated project...)

Access information (intellectual property...)

### Cultivar's irrigation water requirements in the Mediterranean region

Gross and net irrigation requirements under climate change (19 GCMs) for 2,3,4 and 5°C warming, with and without CO<sub>2</sub>-fertilization effect, for 3 scenarios of irrigation technology.



#### Information about the dataset

Reference date 2014-10-01 (Creation: Date identifies when the resource was brought into existence)

Temporal information  
Begin date 2010-01-01  
End date 2100-12-31

Graphic overview



Keywords Agricultural yields (Theme)

Keywords (GEMET - INSPIRE themes, version 1.0 INSPIRE themes) Agricultural and aquaculture facilities (Theme)

Language English

#### Geographic bounding box

WGS 84 Google Mercator

North bound  
52.25

West bound  
-17.75

East bound  
51.75



Data CC-BY-SA by [OpenStreetMap](#)



Reference system identifier [WGS 1984](#)

#### Contact information

Originator

Individual name [Marianela Fader](#)  
 Organisation name [IMBE](#)  
 Position name [Postdoc](#)  
 Delivery point [Aix-Marseille Université, UMR CNRS 7263 / IRD 237 / UAPV, Bâtiment Villemin, Europole de l'Arbois - BP 80](#)  
 City [Aix en Provence](#)  
 Administrative area [Bouches du Rhône](#)  
 Postal code [13545](#)  
 Country [France](#)  
 Electronic mail address [marianela.fader@imbe.fr](mailto:marianela.fader@imbe.fr)



#### Metadata contact

Originator

Individual name [Marianela Fader](#)  
 Organisation name [IMBE](#)  
 Position name [Postdoc](#)  
 Delivery point [Aix-Marseille Université, UMR CNRS 7263 / IRD 237 / UAPV, Bâtiment Villemin, Europole de l'Arbois - BP 80](#)  
 City [Aix en Provence](#)  
 Administrative area [Bouches du Rhône](#)  
 Postal code [13545](#)  
 Country [France](#)  
 Electronic mail address [marianela.fader@imbe.fr](mailto:marianela.fader@imbe.fr)



#### Technical information

##### Access constraint information

##### Legal constraints

Access constraints **Copyright:** Exclusive right to the publication, production, or sale of the rights to a literary, dramatic, musical, or artistic work, or to the use of a commercial print or label, granted by law for a specified period of time to an author, composer, artist, distributor

##### Use constraints **otherRestrictions**

Other constraints [Wait for download until paper submission.](#)

Spatial representation type [Grid: Grid data is used to represent geographic data](#)

Spatial resolution [Denominator 0.5 arc degrees](#)

Lineage

**Statement** The datasets show net and gross irrigation water requirements under climate change simulated by the model LPJmL for following cultivars Temperate Cereals, Rice, Maize, Tropical Cereals, Pulses, Temperate Roots , Potatoes , Tropical Roots, Sunflower, Soybeans, Groundnuts, Rapeseed,Sugar Cane, Citrus, Non Citrus Orchards, Date Palm, Olives, Nuts Trees, Grapes, Vegetables, Cotton, Fodder grass , Others, Manage Grasslands. The unit is mm. It is an irregular grid (non cuadratic), the grid file contains the coordinates.

## New optional contents

URL link

Any kind of associated document  
(Paper, bibliography..)

Direct download access

View mode ▾ Actions ▾  PRINT

## Housing-forest interface mapping - Bouches du Rhône department

Raster file describing housing-forest interface types in the Bouches du Rhône (France) department in 2009. In color, housing-forest interfaces under legal obligation of brush clearing, localised in the forestry sector perimeters with more than 200 meters. In grey, housing-forest interfaces under no legal obligation of brush clearing.



[paper](#)  
([application/pdf](#))

### Information about the dataset

Reference date 2009-01-01T00:00:00 (**Creation:** Date identifies when the resource was brought into existence)

Graphic overview



## Search criterias

Keywords

Geographic search

Temporal extent



hide advanced options

### What

Keyword:

Organisation:

#### INSPIRE

INSPIRE annex:

INSPIRE theme:

Service type:

- Active tectonics
- Agricultural and aqua...
- Agricultural land use
- Agricultural yields
- Atmospheric conditions
- Avignon
- Bio-geographical regi...
- Constantine
- Electrical production
- Environmental monit...
- Geology
- Habitats and biotopes
- Land cover
- Land use

### Where



### When

Anytime:

Metadata change date

From:

To:

Temporal extent

From:

To:

Date type:

From:

To:

Search

Filter

Relevance

0 Selected

Other actions

Preview

### Organizations

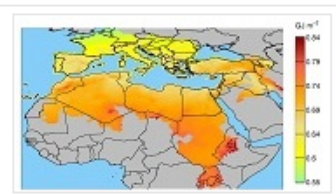
- MIO (6)
- IMBE (5)
- INRA Avignon (5)
- CEREGE (2)
- IRSTEA (2)
- CEA (1)
- UMR LPED AMU-IRD (1)

### Keywords

#### Potential electricity production with photovoltaic panels in the Mediterranean region

Electrical production simulated with an empirical solar panel model.

Electrical Production, Solar Panels, Economy



## Description form

Xls, OpenOffice format

## Conclusion

Promote interdisciplinary collaboration

Promote researcher work

A simple and centralized access to the information

## Thank you / Contact

Romain Suarez

[suarez@otmed.fr](mailto:suarez@otmed.fr)

+33 4 42 60 62 35